

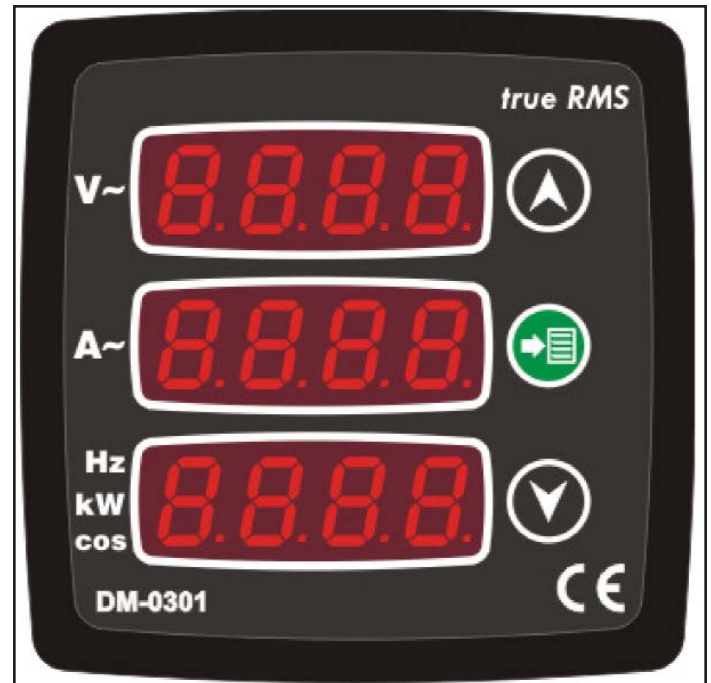


# DM-0301

Digital Multimeter  
72mm, True RMS Measurement

## FEATURES

- True RMS measurements
- AC RMS voltage, AC RMS current, frequency, active power and power factor in single-phase systems
- Adjustable current transformer ratio
- Separate inputs for supply and measurement
- 72mm x 72mm or 96mm x 48mm panel size
- 120/208V,AC or 230/480V,AC power
- Reduced panel depth
- Wide operating temperature range
- Sealed front panel (IP54)
- Plug-in connection system



## MEASUREMENTS

- AC RMS Voltage
- AC RMS Current
- Frequency
- Active Power

## DESCRIPTION

These state-of-the-art panel meters are designed for accurate measurement of the AC RMS voltage, AC RMS current, frequency, active power and power factor in single-phase systems.

Although they are mainly used in electrical panels, these devices can also be integrated in many other applications.

The current transformer ratio can be set between 5/5A and 5000/5A via front panel buttons.

Devices have separate inputs for supply and measurement.

The unit allows both manual selection of the display channel and automatic scrolling.

The DM-0301 is part of a multi-dimensional family of digital panel meters designed for single-phase and 3-phase systems. These include Mains measurement analyzers, power meters, AC ammeters, voltmeters and frequency meters, as well as a combination voltmeter/frequency meter.



For more information or the latest certifications, please contact:  
PC&S, Inc. at +1 (800) 523-9194 or +1 (973) 448-9400  
[www.pc-s.com](http://www.pc-s.com)

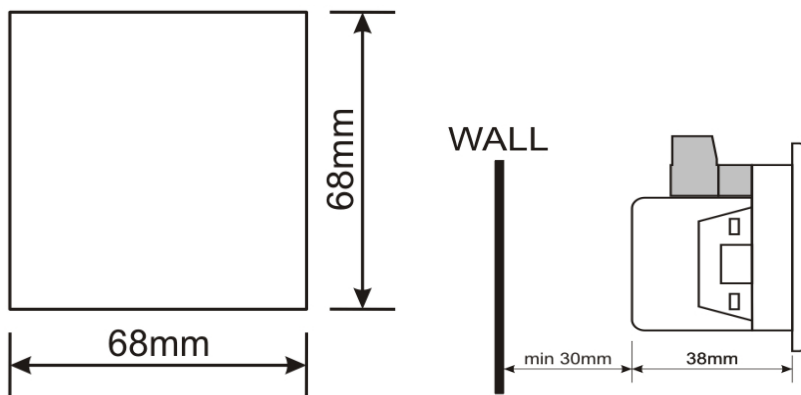
## TECHNICAL SPECIFICATIONS

<b>Power Supply Input</b> 170 - 275V,AC 50 - 60Hz nominal ( $\pm 10\%$ ) Different supply voltages available	<b>Operating Temperature</b> -40°F to 176°F (-40°C to +80°C) <b>Maximum Humidity</b> 95% non-condensing <b>Degree of Protection</b> IP 54 - front panel IP 30 - back panel
<b>Measurement Input Range</b> Voltage: 10 - 300V,AC (L-N) Current: 0.2 - 5.5A,AC Frequency: 30 - 100 Hz	<b>Enclosure</b> Non-flammable, ROHS compliant <b>Installation</b> Flush mounting with rear brackets <b>Dimensions</b> 72mm: 78x78x41mm (3.07" W x 3.07" H) 96x48mm: 96x48mm (3.78" W x 1.89" H) 72mm: 68x68mm (2.67" W x 2.67" H) 0.77 lbs.
<b>Accuracy</b> Volts-Amps-Hz: 0.5% + 1 digit kW: 1.0% + 2 digit cos: 2.0% + 2 digit	<b>Panel Cutout</b> <b>Weight</b> <b>Applied Standards</b> <b>General:</b> LVD: 2006/95/EC EMC: 2004/108/EC <b>Safety:</b> Safety: EN61010 EMC: EN61326
<b>Power Consumption</b> <1.5W <b>Voltage Burden</b> <0.1VA per phase <b>Current Burden</b> <1VA per phase	

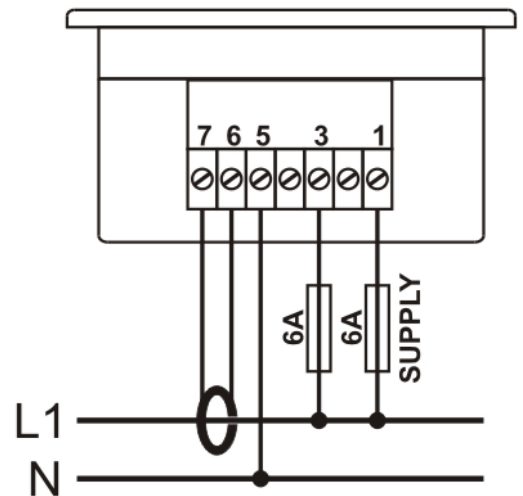
## ORDERING INFORMATION

Part Number	Description	Input / Aux Supply
DM-0101-1-1	1 display, 96 x 48mm	120V,AC
DM-0101-1-2	1 display, 96 x 48mm	240V,AC
DM-0101-2-1	1 display, 72 x 72mm	120V,AC
DM-0101-2-2	1 display, 72 x 72mm	240V,AC
DM-0301-2-1	3 display, 72 x 72mm	120V,AC
DM-0301-2-2	3 display, 72 x 72mm	240V,AC

### MOUNTING TOLERANCES AND PANEL CUTOUT



### TYPICAL CONNECTIONS



**PANEL COMPONENTS & SYSTEMS, INC.**  
**MAIN OFFICE: Tel.: (973) 448-9400 Fax: (973) 448-1674**  
**149 Main Street, Stanhope, NJ 07874 USA**

Or, please contact:

Additional Offices:  
 South East: Charlotte, NC Phone: (704) 535-3357  
 South Central: Tulsa, OK Phone: (862) 258-6974  
 Canada: Edmonton, AB Phone: (877) 962-0557

**+1 (800) 523-9194 • www.pc-s.com**